
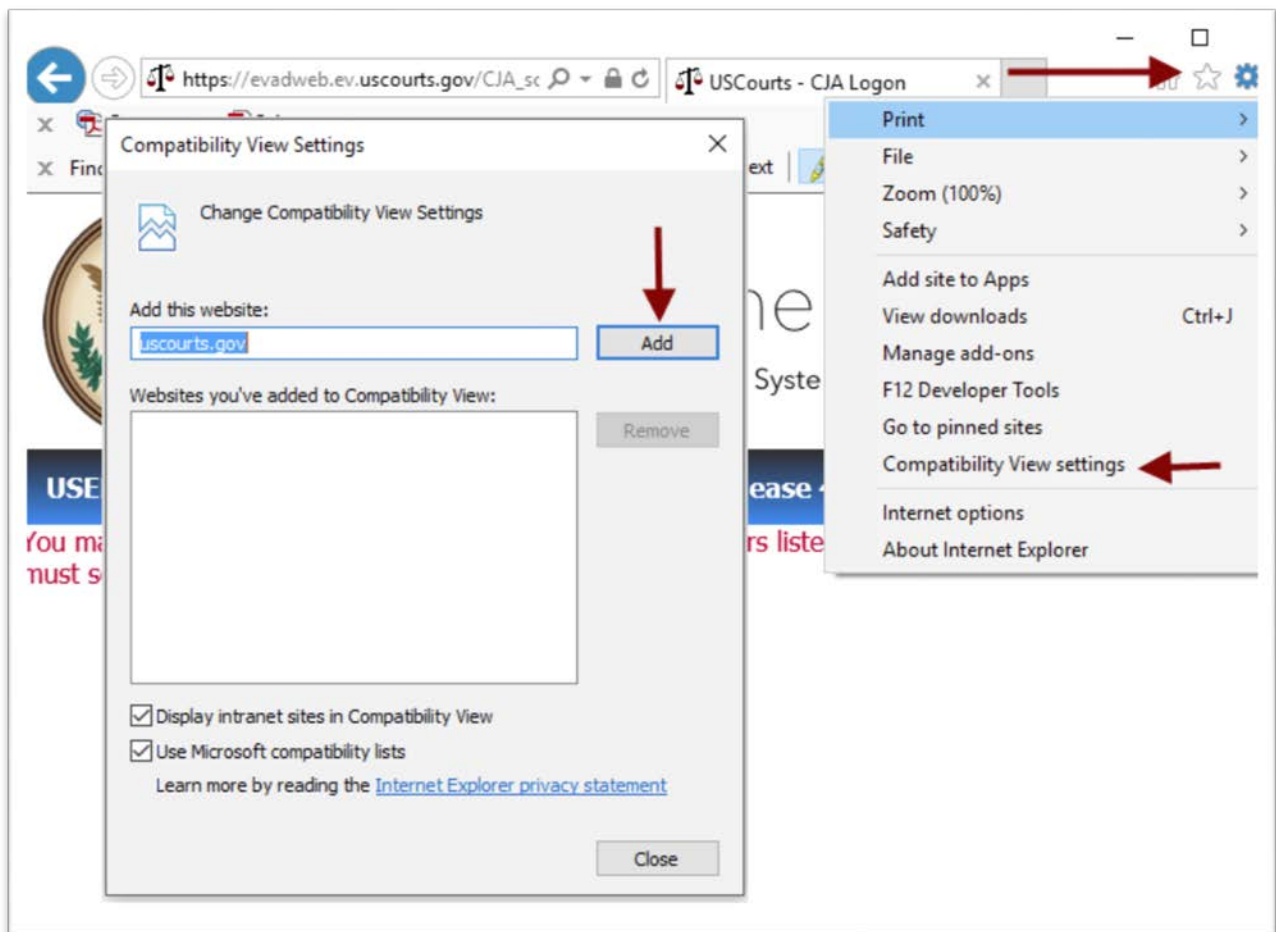



Internet Explorer

Set Compatibility mode

1. Using Internet Explorer, go to the eVoucher website
2. Click on the gear icon 
3. Click on **Compatibility View Settings**
4. The eVoucher website already be in the **Add the Website field**, click **Add**
5. Make sure the **check boxes** below are **checked**



Set browser to display most recent web page

1. Using Internet Explorer, go to the eVoucher website
2. Click on the gear icon 
3. Click on **Internet Options**
4. Click **Settings**
5. Click on **Every time I visit the webpage**

